

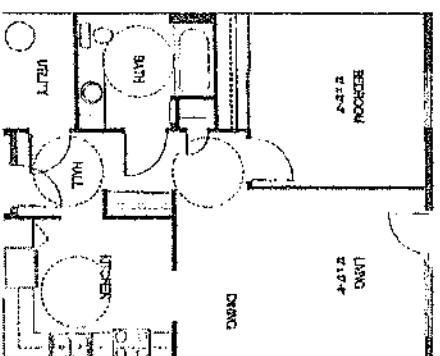
**Supportive Housing/Assisted Living services Available.**  
Services are provided by Four Counties Health Services Personal Support Workers.

Depending on your individual circumstances, you may be eligible for the above services through funding from South West Local Health Integration Network (SWLHIN). For assessment of your eligibility, contact the Community Care Access Centre of London and Middlesex

**310-2222 (CCAC)**

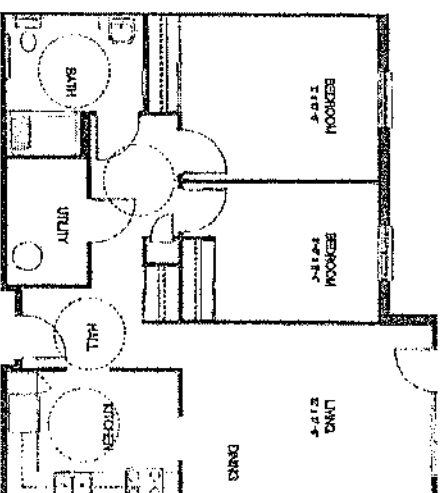
**Or email**

**gethelp@sw.ccac-ont.ca**



**The Newbury Suite**

**1bdrm 750 sq ft**



**The Middlesex Suite**

**2 bdrms 940 sq ft**

## **Four Counties Community**

### **Villa**

**1888 Concession Drive**

**Newbury, Ontario, N0L1Z0**

*Independent Living  
in a  
Community of Care*

*For More Information or to  
Apply for a Suite*

*Please Contact*

**Telephone**

**519-619-3406**

**Fax**

**519-693-6505**

## The Four Counties

Community Villa is a unique care-oriented apartment building located adjacent to Four Counties Health Services in Newbury.

This fully accessible 16 unit building is designed specifically for frail

seniors and persons with disabilities who can live independently but may require a barrier-free living environment or some individual daily care to be able to live on their own.

This is a non smoking facility

### Suite Features

Wide doors, hallways & circulation areas

Eat-in kitchen

Generous living/dining room

Ensuite storage

Accessible washrooms in all units

Stove & refrigerator supplied

Large lowered windows for maximum natural light & ventilation

Screen door to individual private patio

Roll-in showers available in

specific units

Individually controlled heating

### Building Features

16 apartments: 12 one bedroom & 4 two bedroom

One floor design is fully accessible throughout with wide doors and corridors and no steps or stairs

Automatic door opener at main entrance

Residents' activity rooms for daily programs

Access to the community room with fireplace and kitchen

Whirlpool tub and bathing room

Common laundry room, Extra locked storage unit